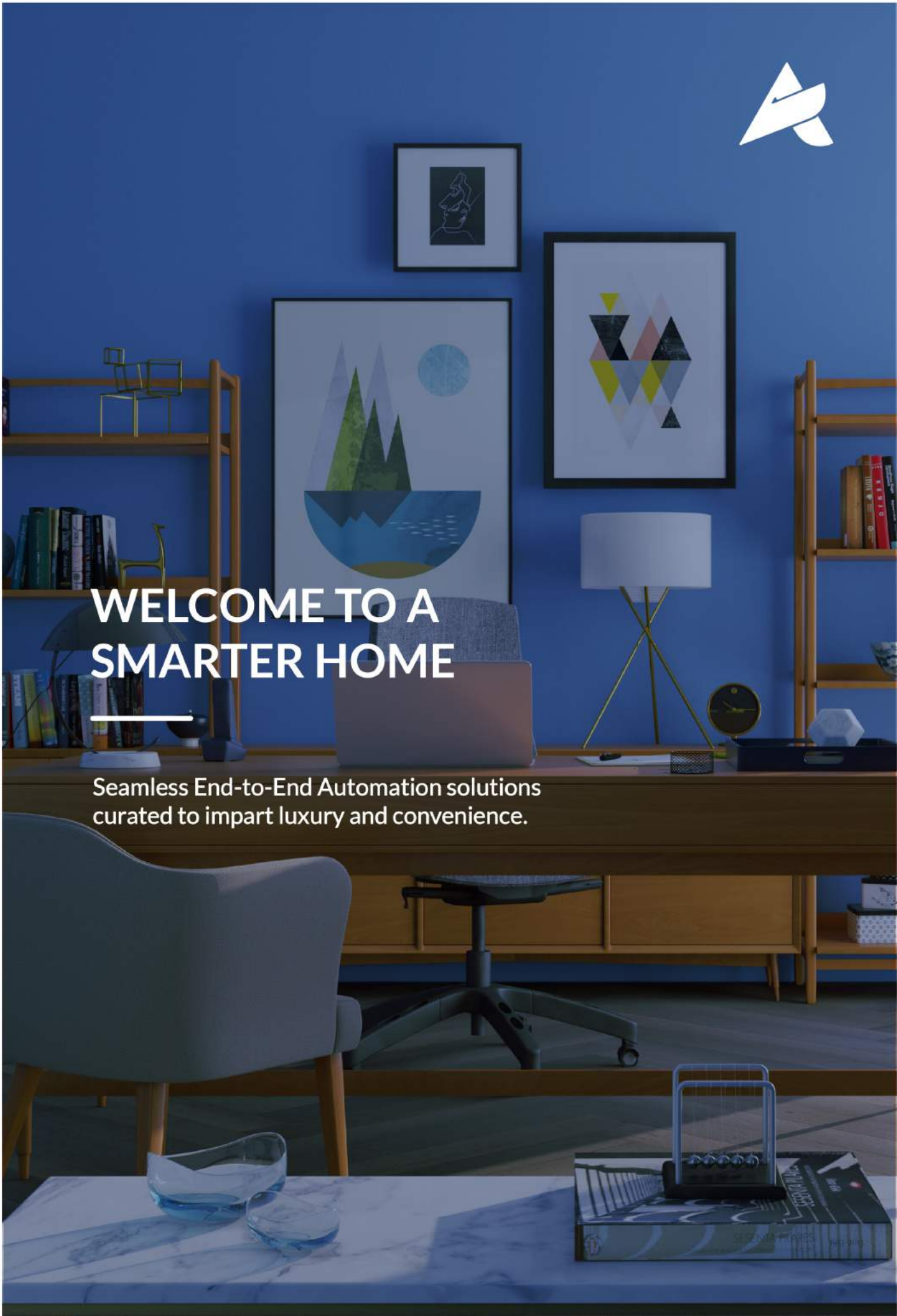


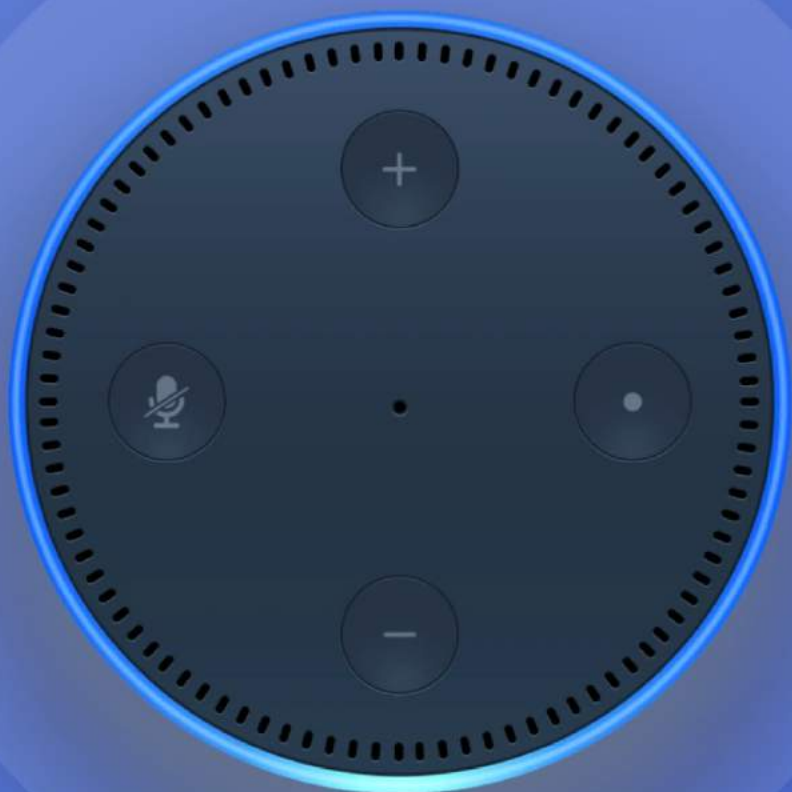


WELCOME TO A SMARTER HOME

Seamless End-to-End Automation solutions
curated to impart luxury and convenience.



“Alexa, Turn on my
bedroom lights.”

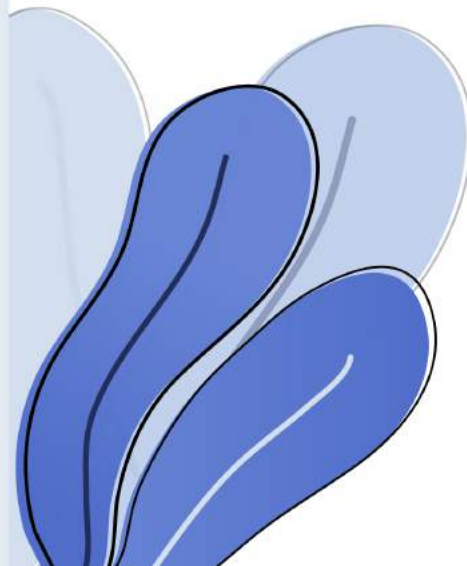
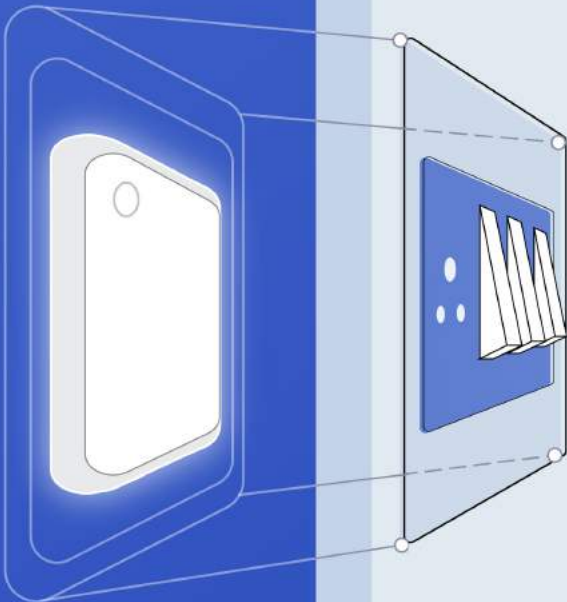




About us

Aliste technologies is an IOT company which leverages the latest networking and communication technologies in transforming commonly used appliances into optimized IOT products.

We develop and curate smart solutions by providing efficient and affordable home automation systems. We function as an extension to real estate businesses to help them develop an edge over the market and elevate the user experience their homes provide.



YOUR HOME AT YOUR FINGER TIPS .

Seamless Control

Control your appliances in your home / office with a single touch on your smartphone.

Analytics

Allows the user to track and regulate their usage with full end analytics.

Audio Commands

Connects the device with voice assistants like Alexa, Siri and Google Assistant





Scheduling

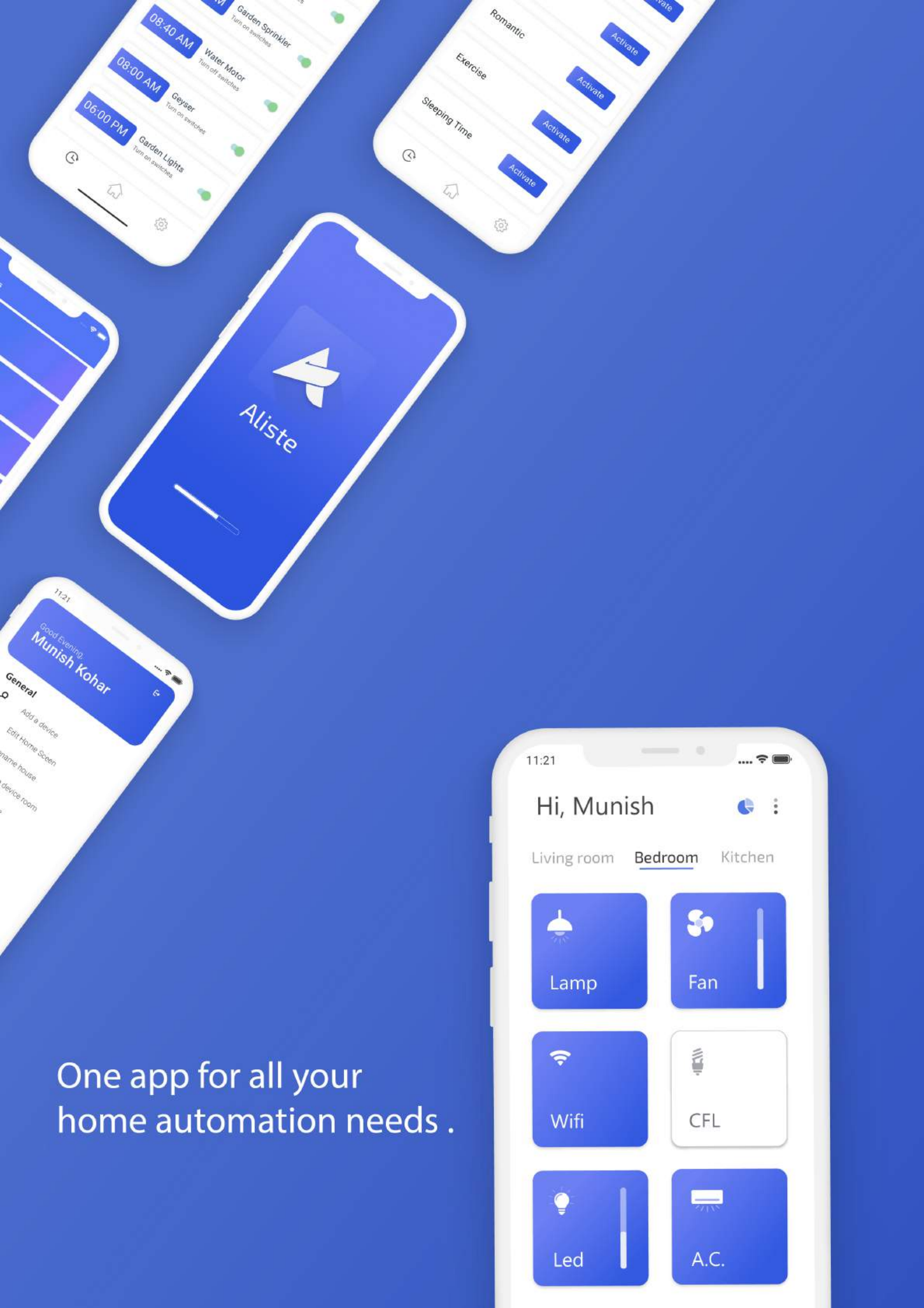
You can schedule the functioning of various appliances by setting timers.

Intensity

Control the brightness of your lights and regulate your fans to suit your needs.

Scenes

Makes your lighting and appliances work in unison to compliment your mood with the scenes feature.



One app for all your home automation needs .

Sync is a premium retrofit device capable of automating your conventional switchboard with utmost convenience.

4+1 FOUR SWITCH MODULE

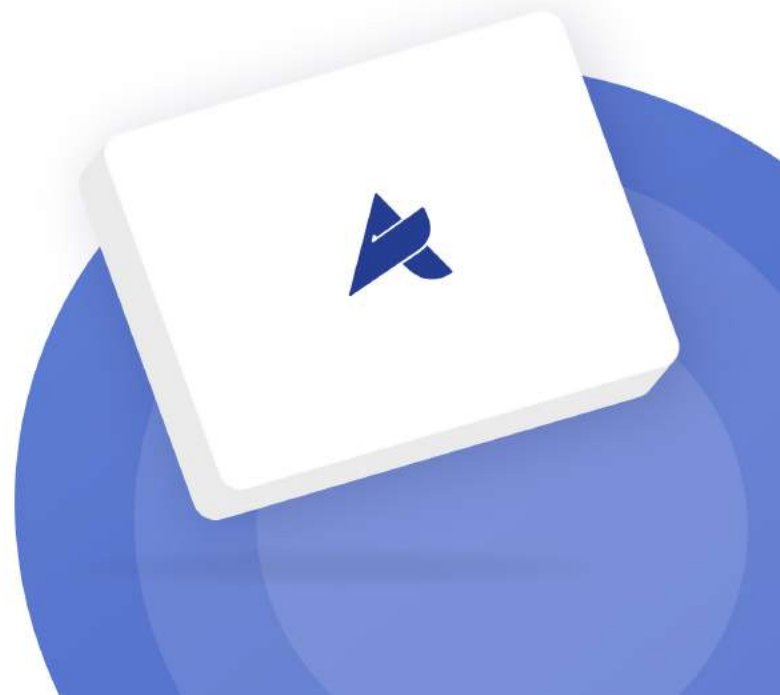
The 4+1-switch module is designed for a switchboard that is connected to light and heavy-load appliances. This module is capable of controlling a single Heavy-Load appliance and upto four Light load appliances.

1 ONE SWITCH MODULE

The Single-Switch Module is designed to allow control of a single Heavy-Load appliance like an AC or geyser, can also control a single light-load appliance such as fans or lights.

5 FIVE SWITCH MODULE

The 5-switch module is designed to control upto five light-load appliances such as fans and lights on a single switchboard.



Aliste Technologies

 Aliste Technologies  @alistetechnologies

 alistetechnologies.com  help@alistetechnologies.com

Tel : +91-8160247293 | +91-7351875393

B-56, Second Floor, Sector-64, Noida 201305, Uttar Pradesh, India